

ARCHIBEAM



SPAN TABLES

The load table (right) has been prepared for Robot Building Supplies to give guidance to span capabilities of Archi-Beam used in domestic applications applying to verandah, patio, awning and carport. Allowable spans apply to open structures as defined in the Australian Standards. Generally two or more sides are open and clear of walls. The above table includes a dead load of 0.1 Kpa for roof cladding and excludes any ceiling loads.

The span is suitable for a non trafficable roof.

Span table has been designed for Wind Classification regions as indicated in AS 4055 - 2006.

A deflection serviceability limit of Span/150 has been applied to the above tables. Span shown in brackets indicate a 20mm maximum deflection limit.

The table is for use in non cyclonic areas as defined in AS/NZ 1170.2 - 2002.

The structural sections comply with the following Australian Standards.

- AS/NZ 4600 - 2005 Cold - formed Steel Structures
- AS/NZ 1170.1 - 2002 Structural design actions-Permanent imposed and other action
- AS/NZ 1170.1 - 2002 Structural design actions-Wind actions
- AS/NZ 4005 - 2006 Wind Loads for Housing

Minimum strength steel used in above table is based on a Yield stress of 300Mpa and Tensile strength of 340Mpa

The site conditions and use of sections for design should be determined by a suitably qualified person

ARCHIBEAM SPAN TABLES FOR ATTACHED FLAT ROOF

DESIGNATION	RAFTER SPACING	MAXIMUM RAFTER SPAN (mm)					
		WIND CATEGORY					
		N1	N2	N3	N4	N5	N6
		Design Pressures (Kpa)					
		0.69	0.95	1.5	2200	3200	4400
100x50x1.5	900	5000 (4400)	4800 (4400)	3800	3200	2600	2200
	1200	4600 (4100)	4200 (4100)	3300	2700	2300	1900
	1500	4000 (3700)	3400	2700	2200	1800	1600
	2100	3700 (3600)	3200	2500	2100	1700	1500
150x50x1.5	900	7600 (6000)	7300 (6000)	5900 (5400)	4800	4000	3400
	1200	6900 (5600)	6400 (5600)	5100	4200	3400	3000
	1500	6000 (5000)	5200 (5000)	4100	3400	2800	2400
	2100	5600 (4800)	4800	3800	3100	2600	2200

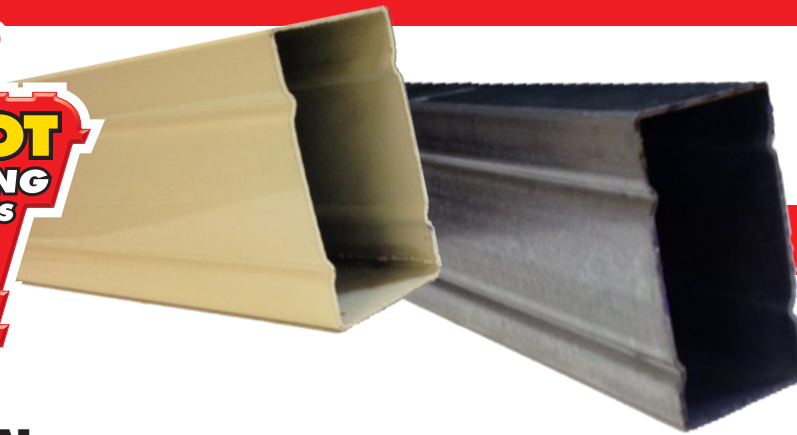
JOISTS	SPACING	
	450MM	600MM
Joists Single Span 150x50x1.5 RHS 1.5kPa Live Load	2700	2550
Joists Continuous Span 150x50x1.5 RHS 1.5kPa Live Load	3250	3100

FLOOR BEARERS	LOAD WIDTH									
	900MM	1200MM	1500MM	1800MM	2100MM	2400MM	2700MM	3000MM	3300MM	3600MM
Floor Bearers Single Span 150x50x1.5 RHS 1.5kPa Live Load	3300	3000	2800	2600	2500	2350	2200	2100	2000	1900
Floor Bearers Continuous Span 150x50x1.5 RHS 1.5kPa Live Load	3700	3500	3200	3000	2800	2600	2400	2200	2000	1900

RAFTERS	SPACING	
	600MM	900MM
Rafters Single Span 100x50x1.5RHS Sheet Roof - Max N3 Wind Categories	4200	3700
Rafters Single Span 100x50x1.5 RHS Sheet Roof - Max C3 Wind Categories	3300	2700
Rafters Continuous Span 150x50x1.5 RHS Sheet Roof - Max N3 Wind Categories	5600	5000
Rafters Continuous Span 150x50x1.5 RHS Sheet Roof - Max C3 Wind Categories	4000	3300

LINTELS	LOAD WIDTH									
	900MM	1200MM	1500MM	1800MM	2100MM	2400MM	2700MM	3000MM	3300MM	3600MM
Lintels Single Span 150x50x1.5 RHS Sheet Roof - Max N3 Wind Category	4100	3900	3650	3500	3350	3250	3150	3100	3000	2900
Lintels Continuous Span 150x50x1.5 RHS Sheet Roof - Max N3 Wind Category	5400	5000	4800	4400	4100	3800	3600	3400	3200	3000
Lintels Single Span 150x50x1.5 RHS Sheet Roof - Max C3 Wind Category	3300	2800	2450	2250	2100	2000	1850	1750	1650	1600
Lintels Single Span 150x50x1.5 RHS Sheet Roof - Max NC3 Wind Category	3300	2850	2500	2300	2100	2000	1900	1750	1650	1600

ARCHIBEAM



SPAN TABLES

TYPICAL APPLICATIONS INCLUDE:

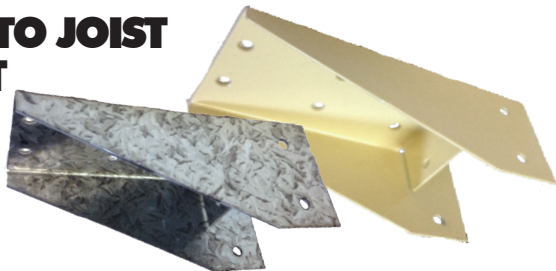
- Flooring Systems
- Concrete Boxing
- Stock Yards
- Purlin Alternative
- Pergolas/Patios
- Architectural Structures
- Fascia
- Verandas
- Innovative Building
- Fencing - All Types
- Form 15 Approved
- Accessories available

Suitable for Painting and Powder Coating
Galvanised inside and outside for that ultimate corrosion protection
Light weight high strength
Accessories available, plastic end caps, Archi-Beam brackets.

ARCHIBEAM SIZE RANGE

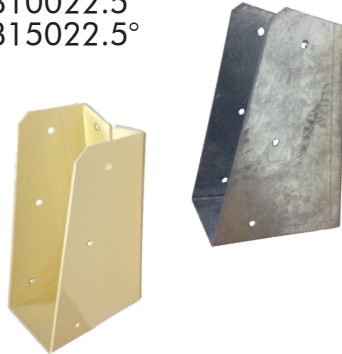
100x50x1.5mm
150x50x1.5mm

BEARER TO JOIST BRACKET



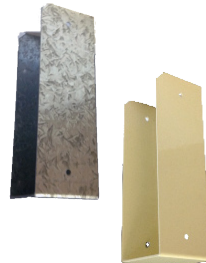
ARCHITECTURAL FRAMING BRACKETS

AFB10015°
AFB15015°
AFB10022.5°
AFB15022.5°



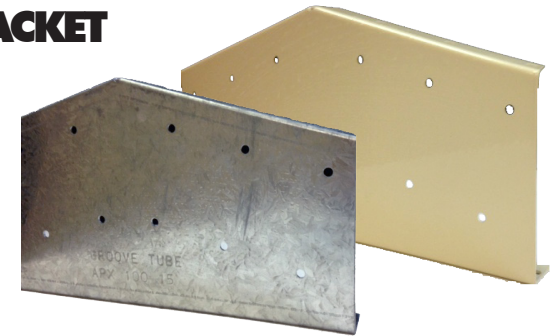
FRAMING BRACKETS

0° - 5° PITCH
FB100
FB150



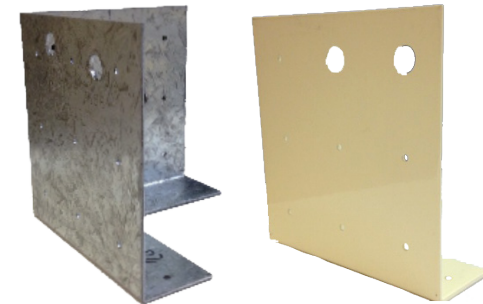
APEX BRACKET

APX10015°
APX15015°
APX10022.5°
APX15022.5°



CORNER BRACKET

CB100
CB150



DROMANA	2 - 6 June Ave	5987 1166
NOTTING HILL	326 Ferntree Gully Rd	9543 3666
PAKENHAM	73 Bald Hill Rd	5941 7677
PRESTON	60 Chifley Dve	9487 9700
SUNSHINE	596 Ballarat Rd	9363 0666
COLDSTREAM	645 Maroondah Hwy	9739 0856

Robot Trading Co Pty Ltd trading as Robot Building Supplies
A.C.N. 004 910 552 A.B.N. 40 103 429 115