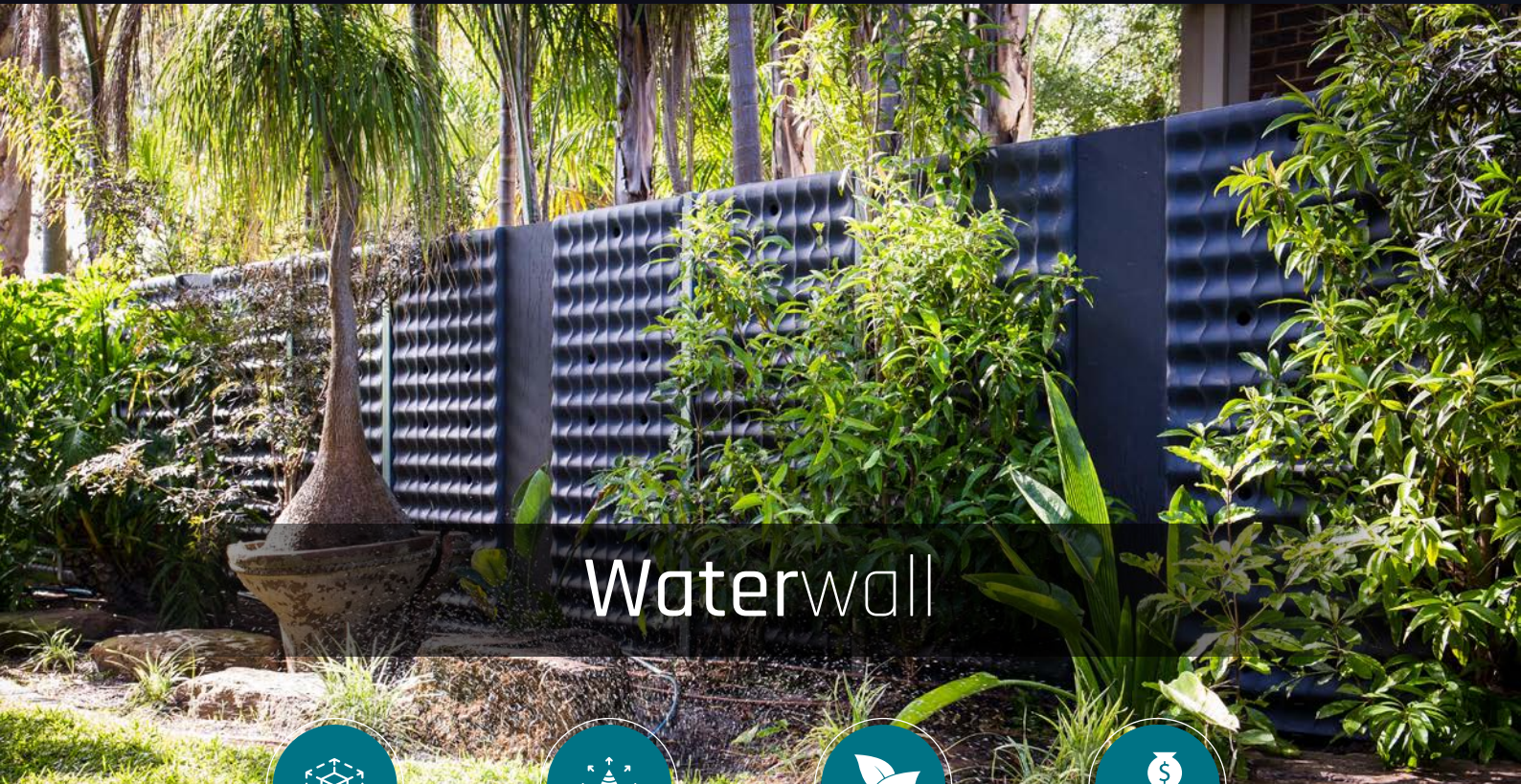




Product Information Pack

thirdspace
SUSTAINABLE WATER SOLUTIONS



Waterwall



Save Space



Capture Water



Grow More

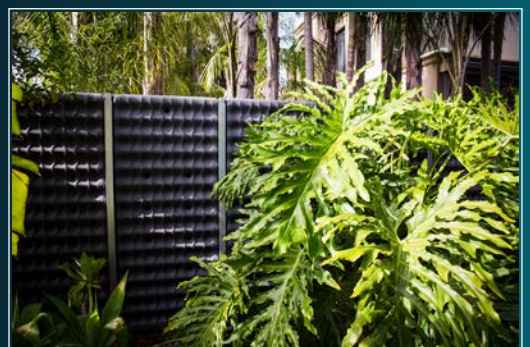


Save Money

The Waterwall allows any property to capture and store rain water in an innovative way, saving valuable space. The system can be customised to fit any lifestyle and need. It's ultra-slim design means the Waterwall can be placed almost anywhere on a property, delineating a boundary fence, as a standalone panel or against an existing structure.

Lasting Engineering, Simple Design

- ✓ Easily installed
- ✓ Maximise garden and valuable land space
- ✓ Save water and money by using rainwater
- ✓ Delineate a boundary or grow a vertical garden
- ✓ Customised colour options
- ✓ Tailored configurations and accessories

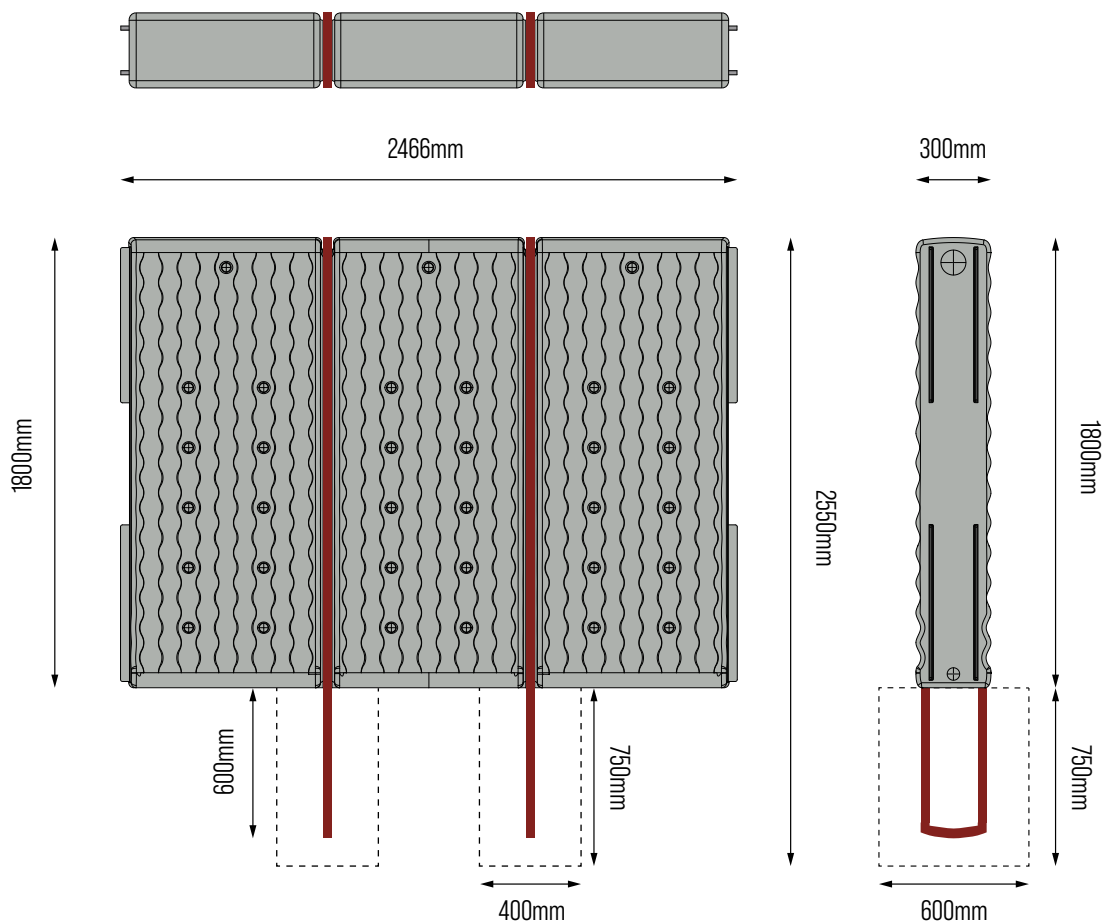


Overview

The Waterwall system activates any property and fence line, to provide significant space savings and reduce water costs. Utilising an ultra-slim design, the Waterwall can fit in narrow spaces, where standard water tanks will not operate efficiently or will take up valuable outdoor space.

Recycled plastics are used in the manufacture of each Waterwall, which reduces plastic waste in our environment. The system helps manage urban stormwater runoff peaks and reduces demand on water storage catchments. An innovative and customisable control system provides flexible management of stormwater storage, allowing water to be moved around the property.

The key benefit of the Waterwall system is its volume to footprint ratio. The advanced design allows for maximum storage volume within the smallest footprint. It's the ultimate space saver in water storage.



Slate



Sandstone



Granite



Ochre



Jade

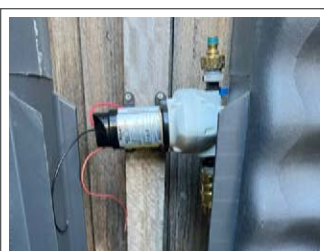
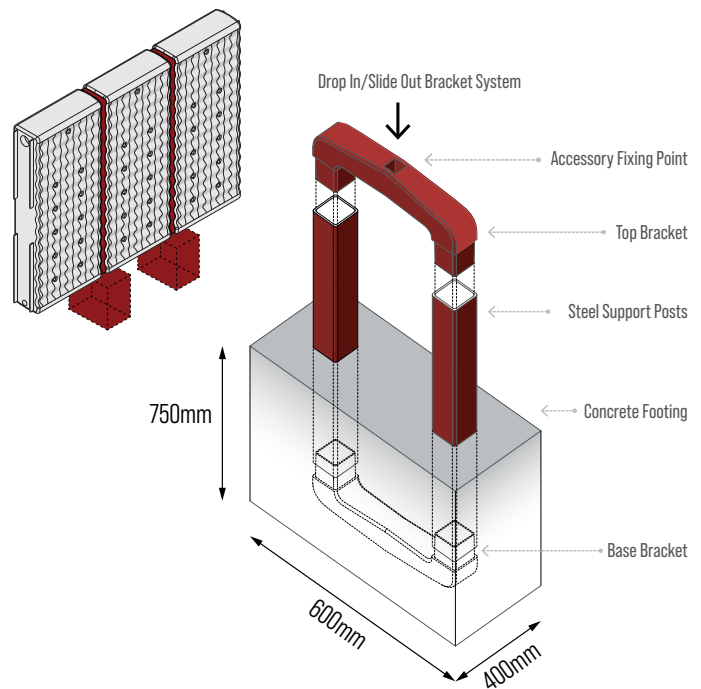


Bluestone

Easy Installation

Capable of storing up to 1200L, each panel rests on two 750mm deep concrete pads which include a base bracket and steel supports. Each panel is placed between these and held firmly in place by brackets connecting the support posts at the top.

By recessing the support posts within the panel, it remains flat. This allows for customising of the vertical face and the addition of a variety of accessories. The rigid superstructure of steel posts and brackets braces each panel securely into place.



1. Determine the location of the Waterwall on the site.

Waterwall is ideally placed on the property boundary to maximise outdoor space. It can also be a free-standing barrier to partition outdoor areas or service a water feature. If the Waterwall is implemented as a boundary fence line and configuration is agreed upon by both parties, it is important to consult the local authority to ensure compliance.

2. Dig holes.

The ideal sized hole for most soils is 750mm deep x 400mm long x 600mm wide.

3. Pre-concrete preparation.

Attach the support system: the top + bottom brackets and the two support posts. Next, position the Waterwall level above the holes, placing it on packers to ensure the panel is level for concreting. Above all, check there are no sharp stones or obstructions when leveling the ground beneath the Waterwall.

4. Concrete in the posts.

Fill the holes with concrete mix to the level of the underside of the Waterwall. Once set, fill under the panel with soil and compact it.

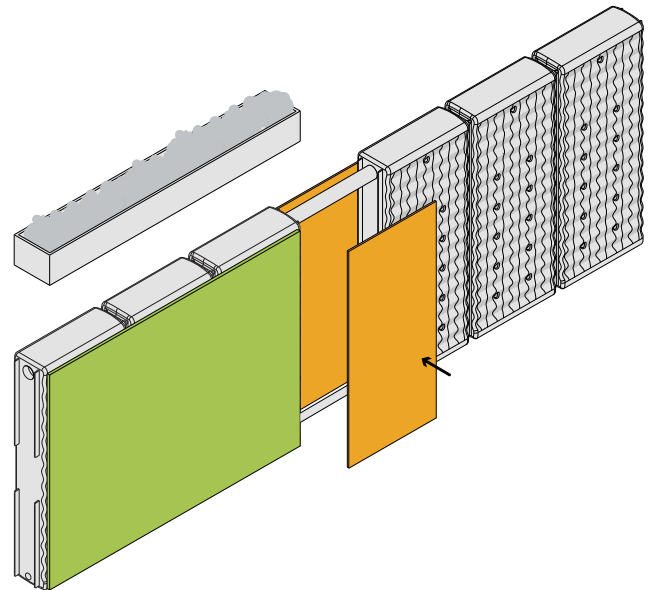
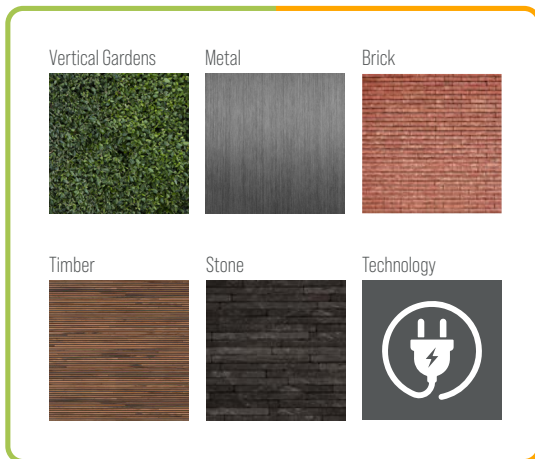
5. Plumbing

Each Waterwall comes with a 1 inch female threaded brass fitting moulded into the bottom of each end of the panel. There are various ways to plumb in the panels, either using hose or blue/green line poly fittings. For compliant installation, please consult a licensed plumber.

Thirdspace strongly recommends that a qualified and certified professional install the Waterwall. Proper installation is crucial to ensure the tank functions correctly and safely. Ensure that the installation complies with all local and state building codes, regulations, and permits. Thirdspace is not responsible for any legal issues arising from non-compliance with the Council or State Government. Thirdspace is not liable for any personal injury, property damage, or other losses resulting from improper installation, use, or maintenance of the Waterwall. For the full disclaimer, please visit www.thirdspace.build/terms-conditions.html



Suite of Accessories



On-wall Cladding

Each Waterwall panel has 33 attachment points designed into each face, facilitating the use of accessories and customised finishes.

Specially designed cladding can be attached to each Waterwall panel to enable a chosen building aesthetic to be achieved. The cladding can also facilitate additional functions that take advantage of the available water supply, such as vertical gardens and water features, including fountains and misters.

Spacer Panels

Spacer panels can be utilised to separate Waterwall panels. Two different types of spacer panels are available in a variety of widths.

Type one is available in 800mm widths and is made of the same recycled plastic and with the same surface patterning as the Waterwall. Together they create a seamless visual aesthetic along a fence line and provide further attachment points.

Type two is available in 400, 600, 900 and 1200mm widths and is a structural frame, allowing for the same range of attachment possibilities as the on-wall cladding.

Both spacer panel types fix onto integrated flanges on the outer sides of both ends of each wall section. This combination of paneling creates a void which can be utilised for locating pumps and plumbing, allowing the system to hide all services.



www.thirdspace.build

To view our product disclaimer, visit us @ www.thirdspace.build/terms-conditions.html